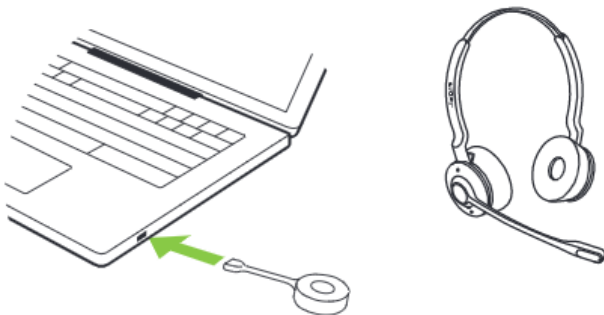


How do I connect my Jabra headset to a computer using the Jabra Link 400?

When purchased as a bundle, your Jabra headset and the Jabra Link 400 DECT adapter come pre-paired. Simply plug the Jabra Link 400 into your computer and turn on the headset.

It may take up to 15 seconds for the headset to be detected by the computer. You may need to set the headset as the output and input device in the sound settings on your computer.



□ □ □ □ □



Jabra Link 400a
USB-A, DECT, MS



Jabra Link 400c
USB-C, DECT, MS



Jabra Link 400c
USB-C, DECT, UC

